

Rudder Angle Sensor (RAS)

Backlit Rudder Angle Indicator (RAI)

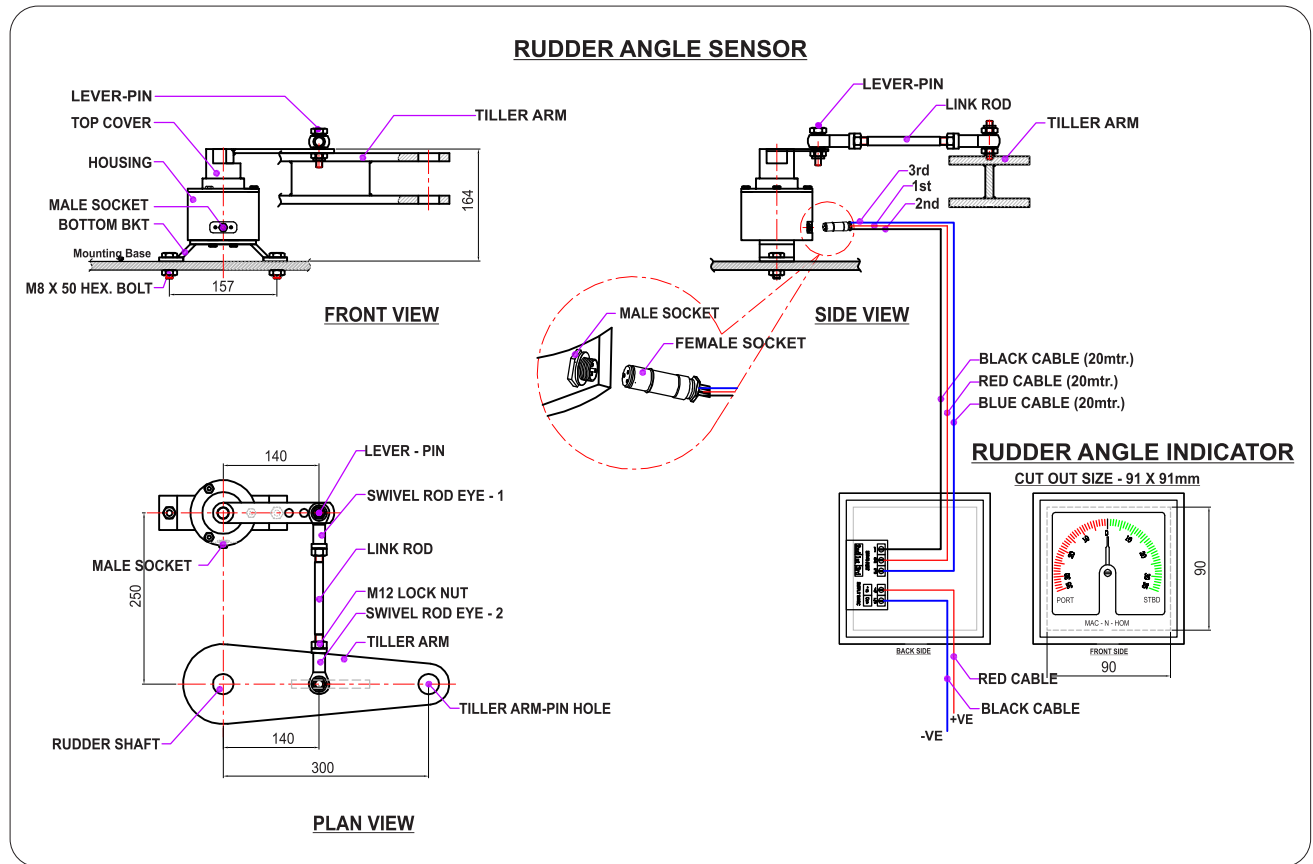


Specifications:-RAI

Supply Voltage	: 24VDC
Total Power	: 3.5Watt
Meter Angle	: 45-0-45
Meter Dimension	: 96 X 96 X 82 mm
Cut out size	: 91 X 91mm

Wiring Guidelines

- To prevent the risk of electric shock power supply to the equipment must be kept off while doing the wiring arrangement.
- Do not touch the terminals while power is being supplied
- Cable used for connection to power source must have a cross section of 1mm² or greater. These wire shall have insulation capacity made of at least 1kV.
- Fuse protection: The unit is normally supplied without a power switch and fuses. Make wiring so that the fuse is placed between the main power supply switch and the controller



Connection Procedure

- Supply Voltage: 24VDC
- 3 core cable provided should be laid, so that, one end with connector comes near to Rudder Angle Sensor and other end comes near Rudder Angle indicator. Then connect them accordingly
- Connect positive 24 VDC to terminal no.4, negative 24VDC to terminal no.5.
- 3 core cable from sensor to be connected to indicator as mentioned. Brown wire to terminal no.2, black wire to terminal no.1 and blue wire to terminal no.3.

Terminal Connection

1	2	3
Servo Pot		
2nd	1st	3rd

4	5
+VE	Com
Supply 24V DC	

Maintenance

- The equipment, should be cleaned regularly to avoid blockage of ventilating parts.
- Clean the equipment with a clean soft cloth. Do not use isopropyl alcohol or any other cleaning agent

Rudder Angle Sensor (RAS) Installation Guidelines

- Ensure the top side of both sensor and tiller arm are at same height level and form right angle with respect to connection rod assembly.
- Ensure both ends of the connection rod assembly are at same height level.
- Mounting bolt of sensor tightened properly.
- Grease should be applied at every moving part of the sensor and connection rod.



MAC N HOM
 info@macnhomsystems.com
 www.macnhomsystems.com